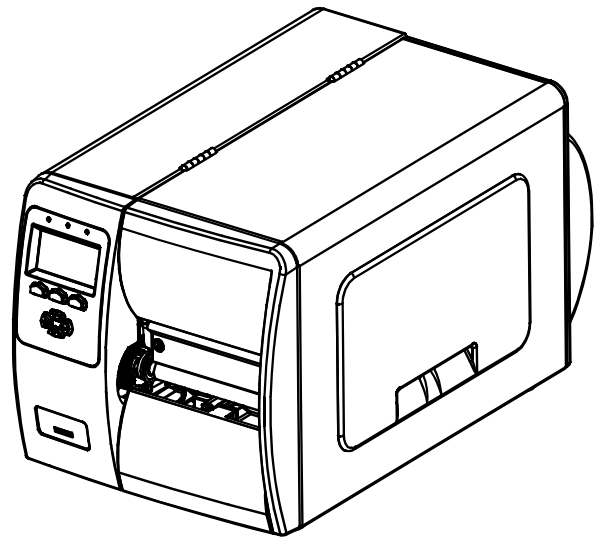
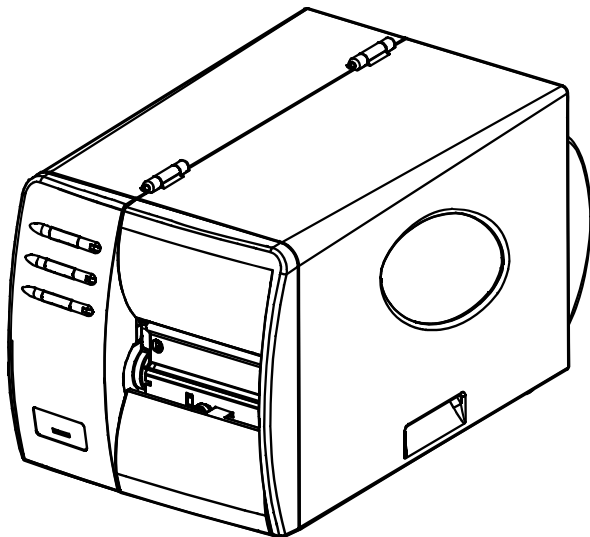


# M-Class™ *Mark II*

Internal Rewinder Option ■■■



right by our customers. ■■■



datamax·o'neil



## ***Contents of the Internal Rewinder Kit***

---

This kit contains the following items:

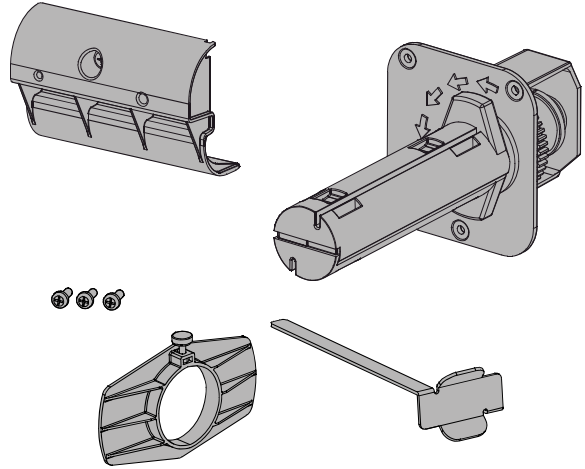
Arc Plate,

Internal Rewinder Assembly

Media Clip

Media Retainer

Screws (3)



*Follow the steps listed below to install this option.*

## ***Tools Required***

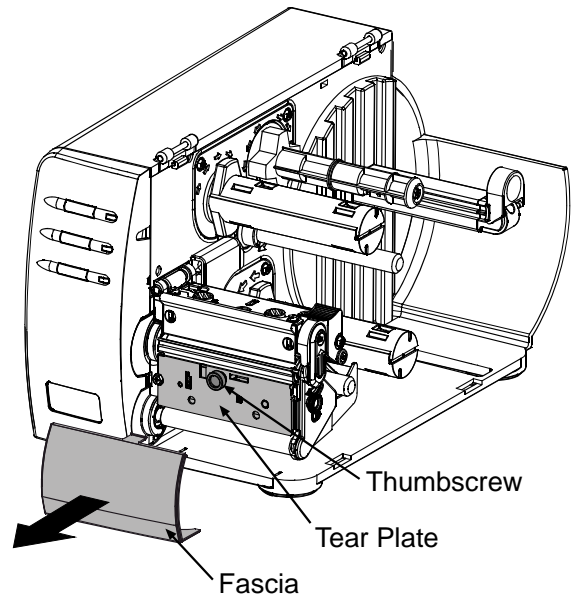
---

To install this option you will need a #2 Phillips head screwdriver.

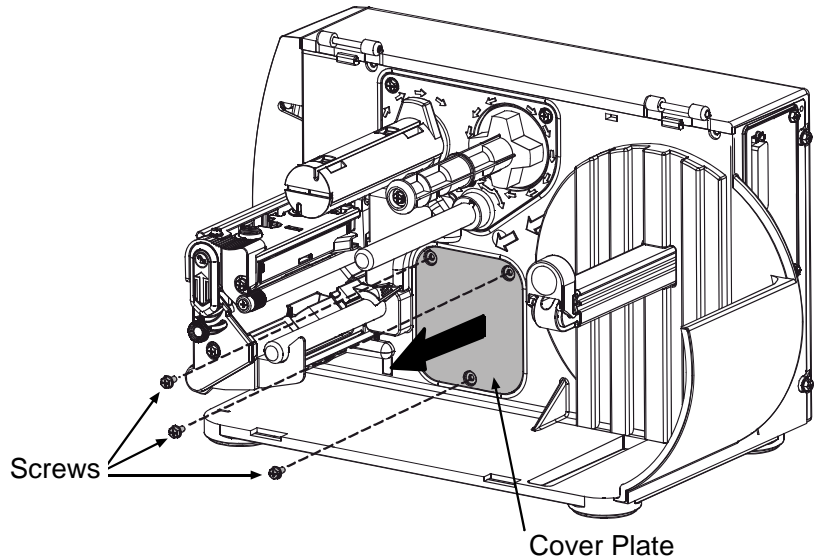
## ***Step 1: Preparing the Printer***

---

- ❶ Turn 'Off' the power switch and unplug the printer.
- ❷ Open the cover. Remove any installed media from the printer.
- ❸ Remove the Fascia by gently pulling it forward.
- ❹ Loosen and remove the Thumbscrew, then remove the Tear Plate.



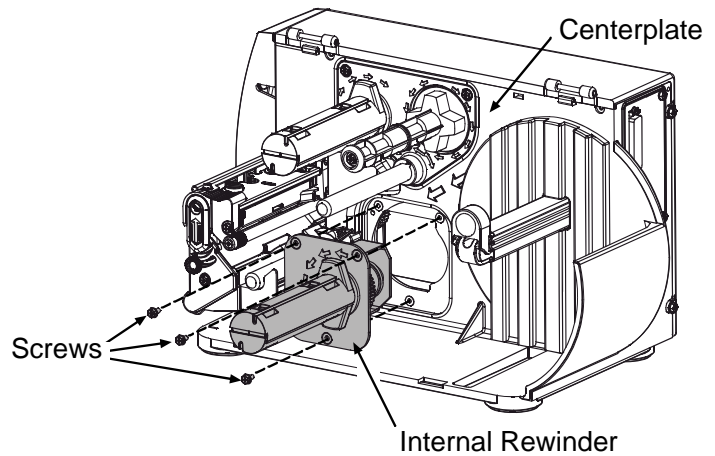
- 5 Remove the three Screws that secure the Cover Plate to the printer.
- 6 Remove the Cover Plate.



---

### **Step 2: Installing the Internal Rewinder**

- 1 Carefully position the Internal Rewinder into the Centerplate of the printer, as shown.
- 2 Secure the Internal Rewinder using the three Screws supplied in this kit.



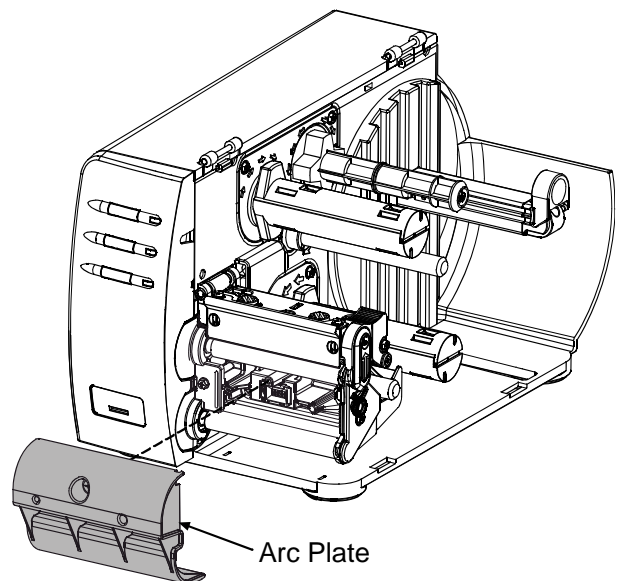
---

### **Step 3: Installing the Arc Plate**

- 1 Position the Arc Plate onto the front of the printer, as shown.
- 2 Using a #2 Phillips head screwdriver, secure the Arc Plate to the printer.

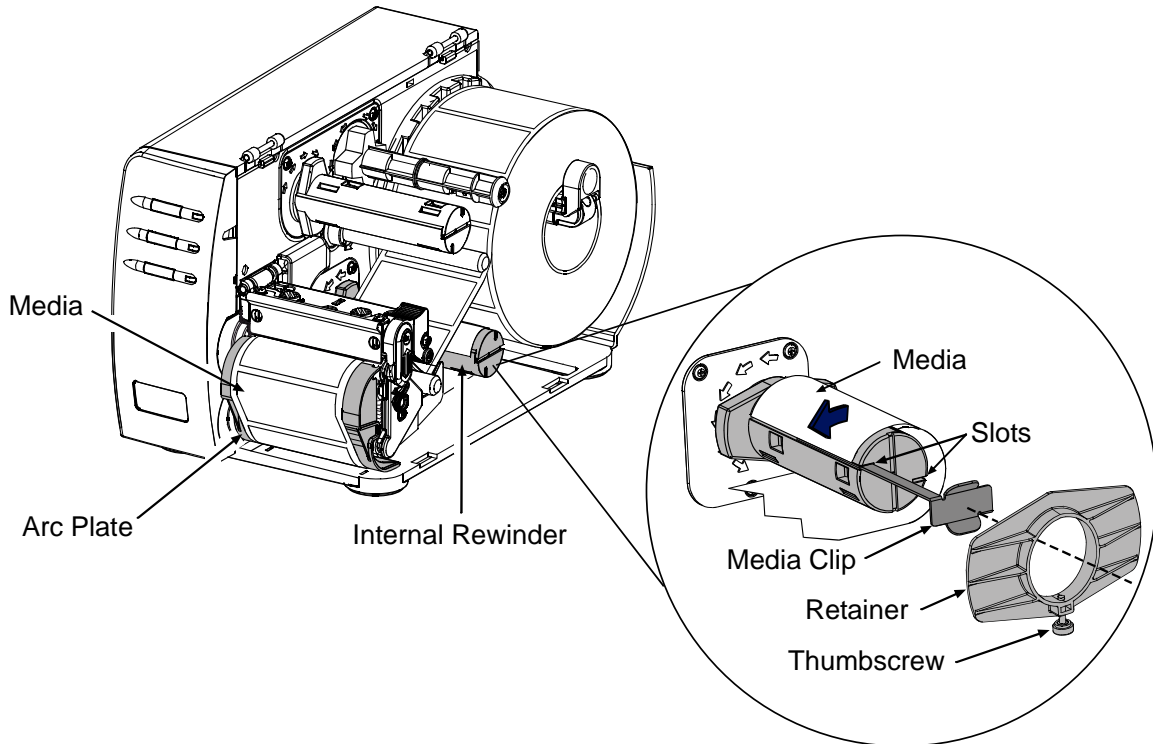
*This completes the installation process.*

*Proceed to Media Loading.*



## Media Loading

- 1 Load media into the printer as you normally would for tear-off operation (see the *Operator's Manual* for details), however, extend an additional 12 inches (30 cm) of media out the front of the printer.
- 2 Route the Media over the Arc Plate and around the Internal Rewinder, as shown below.



**Note:** The Media Retainer can be used in place of the Media Clip for a more consistent rewind roll. The Media Clip and Media Retainer cannot be used together.

- 3 Put the leading edge of the Media into a Slot on the Internal Rewinder and insert the Media Clip. Be sure the leading edge of the Media is cut square and that is inserted evenly into the slot.
- 4 Manually rotate the Internal Rewinder to remove slack from the Media.
- 5 Plug in and turn "On" the printer. After initialization, press the FEED Button to align the next label to the top of form position. The printer is now ready to rewind printed labels.

## Unloading the Internal Rewinder

When the Internal Rewinder becomes full, remove the Media Clip. Grasp the used media and carefully pull it from the Internal Rewinder.

**Note:** Never allow the outer diameter of backing material to exceed 4 inches (102 mm) on the Internal Rewinder.

