

# NETira™ Software Solutions

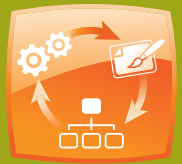
Key to High Performance Printing ■ ■ ■

the right tools for  
the right job ■ ■ ■



**Optimizes Printer  
Performance**

- Plug and Print
- Minimize printer setup time
- Create and save files only once



**Easy Integration  
with common user  
interface**

- Single menu navigation for multiple setups
- Modern look and feel
- Easy setup of printer monitoring



**Tested and  
Certified  
applications by  
Datamax-O'Neil**

- Proven tools for out-of-box performance
- Tested with certified Datamax-O'Neil supplies
- Support for portables and stationary printers

Unlock the power of your Datamax-O'Neil printers with NETira™ software. NETira is a suite of software products designed to expand and enhance the performance of your Datamax-O'Neil printers. With the touch of a few buttons, NETira applications save you time and effort when configuring, managing and printing labels and receipts.

Thoroughly tested and certified by Datamax-O'Neil technicians, NETira provides users with easy-to-use software that provides a consistent look and feel for navigation. Whether it's a single printer or part of a networked environment, NETira applications reduce setup time and provide users with the tools to effectively utilize all of their printers' capabilities. The NETira suite includes NETira LD - Label Designer, NETira RM - Remote Manager and NETira CT - Configuration Tool.



**NETira™  
Configuration Tool**

• Easily configure your printer setup



**NETira™  
Label Designer**

• Create and design labels simply and easily

**NETira™**   
**Remote Management**

• Monitor and manage your  
printers regardless of location



**datamax • o'neil**  
right by our customers.

# Configuration Tool ■ ■ ■

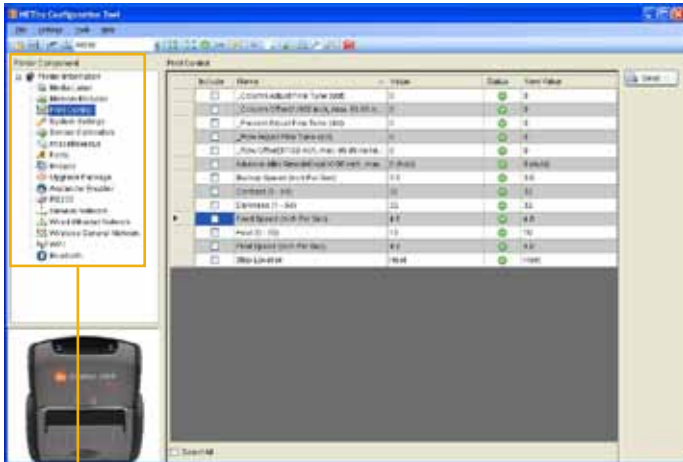


## NETira™ Configuration Tool

For Datamax-O'Neil users who needs to configure their printers, Datamax-O'Neil offers NETira CT, an enhanced configuration tool that makes printer setup quick and efficient with a simple navigation window to meet the varied needs of users requirements.

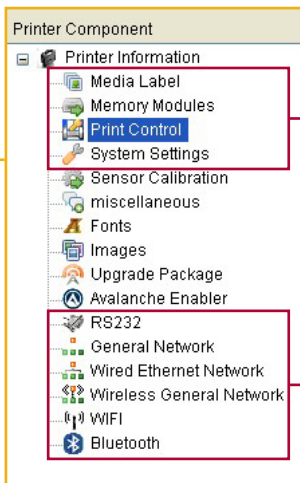
### Printer Setup:

- Printer Control Setup
  - > Customize speed and feed
  - > Printer configurations
  - > Print test labels
- Communication Setup
  - > Set up port connections
  - > Configure Network setting
- Printer Updates
  - > Update firmware
  - > Install fonts and images



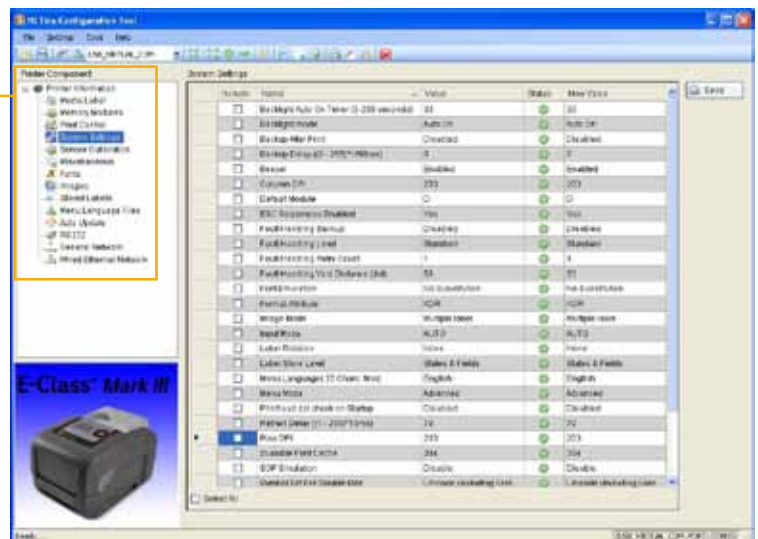
### features & benefits ■ ■ ■

- Minimizes printer setup time
- Easy-to-use single menu screen for multiple setup commands
- Set up and save multiple printer settings through a single menu – no need to navigate through multiple confusing menus
- Update firmware, files and fonts quickly and easily
- Faster performance – updates only parameters that have been selected
- Intuitive network configuration setup
- Save a configuration and apply to additional printers – ensures accuracy and continuity
- Built-in diagnostics



*Customize the printer to individual specifications*

*Easy network connectivity*



### Minimum Systems Requirements:

- Runs on Windows XP SP2, Vista and Windows 7
- Communication support includes: Serial, LAN, WLAN, USB
- Supports Automode and DPL

### Printers Supported:

- RL3, RL4, E-Class Mark III Pro and Pro+, I-Class Mark II

*Note: all other Datamax-O'Neil stationary printers are supported by DMX Config*



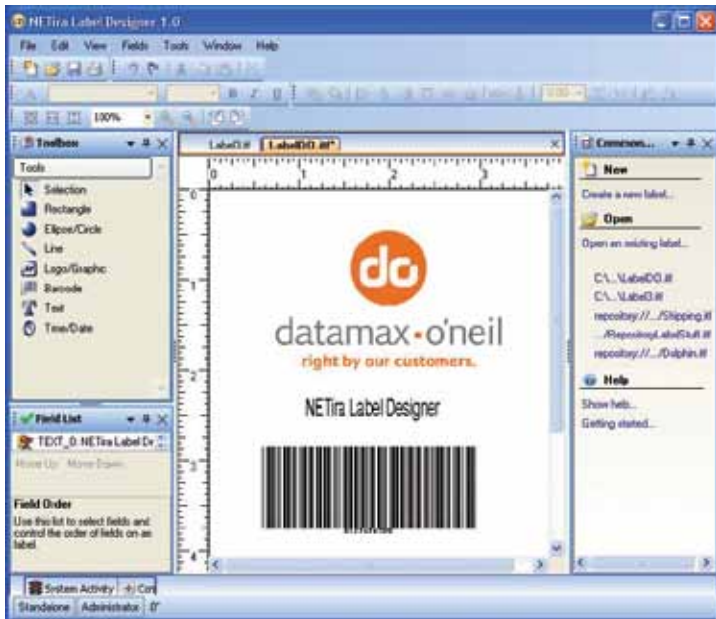
For small/medium business user applications that require simple label designs, Datamax-O'Neil offers NETira LD, a free out of the box label creation tool that is easy to use and quickly turns desktop printers into a labeling solution.

## Create:

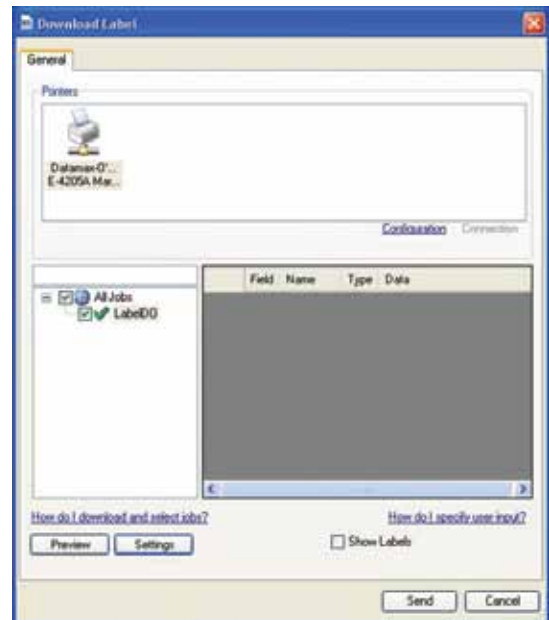
- Create labels containing your product information
- Easily add text, date-time, graphics, images, logos
- Preview label design prior to printing
- Print sequential labels
- Save label designs for recall or sharing
- Supports common linear bar codes

## features & benefits ■ ■ ■

- Out-of-box plug and print
- Intuitive single design page for visual label creation
- Save label designs for multiple recall
- Stores images in an easy-to-access folder on your desktop
- Prints worldwide industry barcode labels
- Customize with logos and images



Design a custom label from the WYSIWYG menu



Visually select the preferred printer

## Minimum System Requirements:

- Requires 28MB of hard drive space
- Runs on Windows XP, Windows 2000, Vista and Windows 7
- Supports all communication ports: serial, parallel, USB, LAN, WLAN

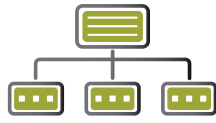
## Printers Supported:

- Supports most Datamax-O'Neil label printers
- Visit [www.datamax-oneil.com](http://www.datamax-oneil.com) for a list of supported printers



Sample labels

## NETira™ Remote Management



For companies with distributed environments that require real time printer status and control, Datamax-O'Neil offers NETira RM, a certified software tool that offers remote monitoring and management of Datamax-O'Neil printers from a single console to maximize printer efficiency.

### Monitor / Alert Notifications:

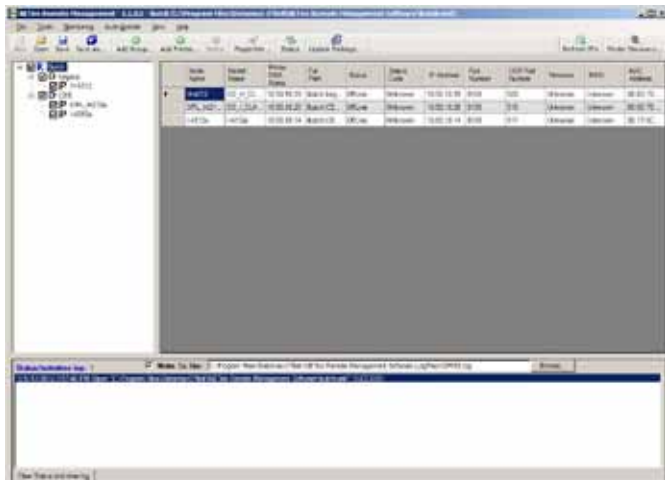
- Global view of printers on the network
- View one/multiple printers from a single customized console
- Proactive alert notification issued via email or text messaging
- Monitor printer activity through logically organized groups

### Manage:

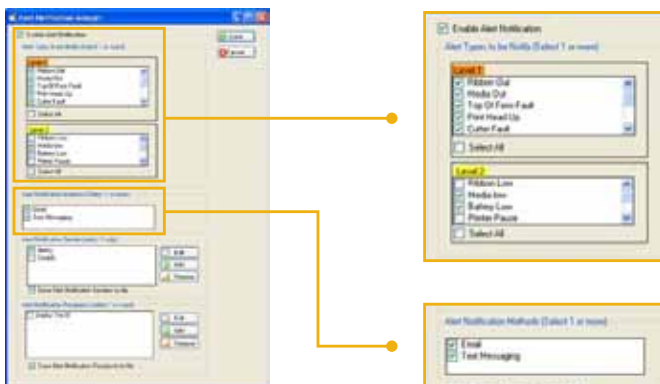
- Remote manage and organize global printers from a single console
- Update firmware, graphics, fonts, configuration attributes to a single or group of printers (supported printers)
- Update printers on-demand or by built-in scheduler

### Configuration:

- Quickly access integrated configuration tool for on-demand printer changes
- Built-in diagnostic tool assures optimum printing performance
- Customize printer settings via the remote console



Logically organize printer groups



Customize alert notification level

Set up alert methods

### features & benefits ■ ■ ■

- Monitors all Datamax-O'Neil printers on your enterprise network
- Easily customize your display with simple drag and drop configuration
- Reduce printer downtime with real time visual alert notification
- A quick key stroke allows you to launch NETira CT from within Remote Manager for quick printer setup changes
- Stay connected: Send text or alert notifications to your PC or phone
- Monitor printhead status and printhead performance
- Easy to access printer status XML log files to support most common databases

### Minimum System Requirements:

- Supports Window XP SP2, Windows 7, Windows Vista, Windows Server 2003 and newer
- Requires .NET framework 3.5
- Requires a TCP/IP printer
- Requires access to TFTP server for management
- Supports Automode and DPL

### Printers Supported:

- Manage and Monitor: RL3, RL4, E-Class Mark III Pro/Pro Plus and I-Class Mark II
- Monitors: M-Class Mark II, H-Class, A-Class Mark II, I-Class, E-Class Mark II

Note: contact Datamax-O'Neil for additional supported printers



to learn more, visit [www.datamax-oneil.com](http://www.datamax-oneil.com)

Specifications subject to change without notice. Copyright 2012, Datamax-O'Neil (rev. 20120712)



datamax • o'neil  
right by our customers.

A DOVER Company